

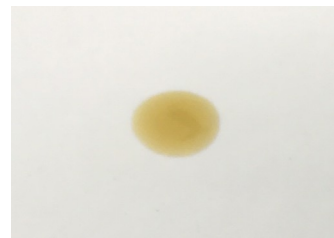
CERTIFICATE OF ANALYSIS No.: 2021-5261

CLIENT

KANNABIO HEMP HELLAS, SKOUFA 110
38334 VOLOS, Greece

SAMPLE

CARE DROPS 10%



Sample condition: SUITABLE
Sample ID: 2127027
Sample type: Viscous liquid
Batch No.: 41449

Work order: 2021-105345
Analysis ID: 2021_158
Method ID: PHL_RPC_12C
Method SOP: MET-002

Sample received: 08/07/2021
Start of analysis: 09/07/2021
End of analysis: 12/07/2021
Analyst: Aleksander Jefim

CANNABINOID PROFILE	Concentration [% w/w]	Expanded uncertainty [% w/w]	Graphic presentation of relative cannabinoid concentration
CBDV - Cannabidivarin	0.079	0.018	
CBDA - Cannabidiolic acid	< LOQ	n/a	
CBGA - Cannabigerolic acid	< LOQ	n/a	
CBG - Cannabigerol	0.070	0.021	
CBD - Cannabidiol	10.73	0.54	
THCV - Tetrahydrocannabivarin	< LOQ	n/a	
CBN - Cannabinol	0.0336	0.0074	
CBC - Cannabichromene	0.145	0.025	
THC - Δ-9-Tetrahydrocannabinol	0.204	0.035	
THCA - Δ-9-Tetrahydrocannabinolic acid	< LOQ	n/a	
8-THC - Δ-8-Tetrahydrocannabinol *	< LOQ	n/a	
CBL - Cannabicyclol *	< LOQ	n/a	

The results marked by * relate to non-accredited activity.

Units and abbreviations: % w/w = weight percent, < LOQ = below the limit of quantitation (0.03 % w/w), ND = not detected, n/a = not available.

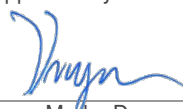
The results given herein apply only to the sample as received. Expanded Uncertainty was calculated using coverage factor $k = 2$, corresponding to a double standard uncertainty and characterizes the interval value in which it is possible to expect the real value with a probability of 95%. This is stated according to the ISO/IEC Guide 98-3.

Total or partial reproduction of this document is not allowed without the permit from PharmaHemp d.o.o. The document does not substitute any other legal document.

Date issued:

12/07/2021

Approved by:



mag. Marko Dragan
Analytical Laboratory Manager

Authorized by:



dr. Boštjan Jančar
Chief Technology Officer

End of Certificate