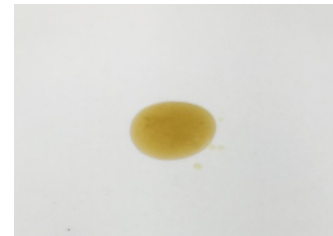


CERTIFICATE OF ANALYSIS No.: 2022-8112

CLIENT

KANNABIO HEMP HELLAS, SKOUFA 110
38334 VOLOS, Greece



SAMPLE *






mood revitalize & protect

Sample condition: SUITABLE
Sample ID: 2210046
Sample type: Viscous liquid
Batch No.: * 29012021

Work order: 2022-106276
Analysis ID: 2022_057
Method ID: PHL_RPC_12C
Method SOP: MET-002-03

Sample received: 09/03/2022
Start of analysis: 10/03/2022
End of analysis: 11/03/2022
Analyst: Janez Gerdenc

* Information provided by the client.

CANNABINOID PROFILE	Concentration [% w/w]	Expanded uncertainty [% w/w]	Graphic presentation of relative cannabinoid concentration
CBDV - Cannabidivarin	0.069	0.016	
CBDA - Cannabidiolic acid	< LOQ	n/a	
CBGA - Cannabigerolic acid	< LOQ	n/a	
CBG - Cannabigerol	0.067	0.020	
CBD - Cannabidiol	6.25	0.31	
THCV - Tetrahydrocannabivarin	< LOQ	n/a	
CBN - Cannabinol	0.0306	0.0067	
CBC - Cannabichromene	0.128	0.022	
THC - Δ-9-Tetrahydrocannabinol	0.189	0.032	
THCA - Δ-9-Tetrahydrocannabinolic acid	< LOQ	n/a	
8-THC - Δ-8-Tetrahydrocannabinol	< LOQ #	n/a	
CBL - Cannabicyclol	< LOQ #	n/a	

Units and abbreviations: % w/w = weight percent, < LOQ = below the limit of quantitation (0.03 % w/w), ND = not detected, n/a = not available.

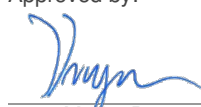
The results given herein apply only to the sample as received. **Expanded Uncertainty** was calculated using coverage factor $k = 2$, corresponding to a double standard uncertainty and characterizes the interval value in which it is possible to expect the real value with a probability of 95%. This is stated according to the ISO/IEC Guide 98-3.

Total or partial reproduction of this document is not allowed without the permit from PharmaHemp d.o.o. The document does not substitute any other legal document.

Date issued:

11/03/2022

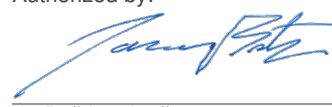
Approved by:



mag. Marko Dragan

Analytical Laboratory Manager

Authorized by:



dr. Boštjan Jančar

Chief Technology Officer

End of Certificate